



STUDIO LLOYD

FOUNDED IN 2016, OUR DESIGN HOUSE WORKS CLOSELY WITH CLIENTELE TO
DEVELOP BEAUTIFUL WORKS OF FUNCTIONAL ART, CRAFTED BY HAND FOR
THE RESIDENTIAL, COMMERCIAL & HOSPITALITY INDUSTRY

STUDIO LLOYD AIMS TO PROVIDE EXCLUSIVITY BY CREATING CUSTOM PIECES
THAT ARE CAPTIVATING FOR UNIQUE SPACES

CATALOGUE

ALL PRODUCTS

STUDIO LLOYD.COM



DESIGNER LIGHT SCULPTURE,
SEATING & OBJECTS.

|

CUSTOM MADE FOR
OUT OF THE ORDINARY INTERIOR &
EXTERIOR SPACES.

|

HANDCRAFTED IN
CAPE TOWN, SOUTH AFRICA.

OUR MAIN MATERIAL | HIGH QUALITY BRAIDED ROPE

AT STUDIO LLOYD WE USE VARIOUS DIAMETERS OF MULTIFILAMENT ROPE THAT IS COMMONLY USED FOR THE MARINE YACHTING INDUSTRY.

WHAT'S UNIQUE ABOUT OUR WORK IS OUR ROPE HAS BEEN COATED WITH **UV PROTECTION** MAKING IT A PERFECT MATCH FOR OUTDOOR & INDOOR APPLICATIONS.

THE MATERIAL HAS BUILT IN COMPOSITE TO **HOLD COLOUR AND PROTECTS AGAINST DECOMPOSING, ANTI-HUMIDITY DECAY & INSECT INHABITATION.**

OUR MULTIFILAMENT ROPE MAKES THE INSTALLATIONS WEATHER RESISTANT, THEREFORE KEEPING ITS SHAPE AND QUALITY OVER TIME.

A TRUE INVESTMENT TO YOUR INTERIOR.

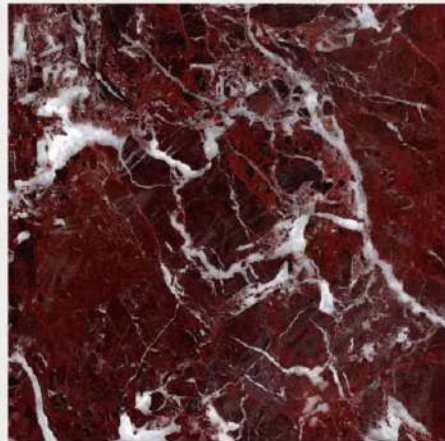


- OPAL BEIGE
- MALTA BROWN
- RUBY RED
- MALACHITE GREEN
- OLIVINE GREEN
- TRAVERTINE WHITE
- DIAMOND GREY
- JASPER GREY
- AZURITE BLUE
- ONYX BLACK

MARBLE DISKS AND INLAY



- OPAL BEIGE
- MALTA BROWN
- RUBY RED
- MALACHITE GREEN
- OLIVINE GREEN
- TRAVERTINE WHITE
- DIAMOND GREY
- JASPER GREY
- AZURITE BLUE
- ONYX BLACK



CUSTOM | LIGHT SCULPTURE THE EMERALD'S EYE

LOCATION - SAUDI ARABIA

THE EMERALD'S EYE IS A CUSTOM DESIGNED LIGHT SCULPTURE. IT IS MADE OF A STEEL FRAME WITH BRASS ACCENTS, EMERALD GREEN ROPE, DEEP GREEN GUATEMALA MARBLE, HIGH QUALITY BRASS ELECTRICAL FITTINGS, 7 ELONGATED LIGHT BULBS AS WELL AS UNIQUE BRASS WIRE DETAILING.

SIZE | 2.8M (L) X 1000MM (W) X 800MM (H)



WE ARE EXTREMELY FORTUNATE THAT SOUTH AFRICA RECEIVES A LARGE VARIETY OF HIGH QUALITY MARBLE AND STONE.

THESE ELEMENTS ARE PERFECT FOR AN ELEGANT LUXURY FINISH.

| LIGHT SCULPTURE



AMOEBA | LIGHT SCULPTURE

THE SKOTNES RESTAURANT, CAPE TOWN, SOUTH AFRICA

DIMENSIONS

5M (L) X 1,2M (W) X 1,7M (H)

DETAILS

THE AMOEBA LIGHT SCULPTURE IS LOCATED AT THE SKOTNES RESTAURANT IN THE NORVAL FOUNDATION IN CAPE TOWN, SOUTH AFRICA. ITS ORGANIC SHAPE COMPLIMENTS THE LONG SEATING ARRANGEMENT AND ADDS DEPTH TO THE SPACE. IT IS MADE OUT OF OUR DIAMOND GREY MULTIFILAMENT ROPE, 9 WARM DIMMABLE LED BULBS, WIRED BRASS DETAILING AND HIGH-QUALITY BRASS FITTINGS.

LOCATION

THE PIECE IS LOCATED AT THE SKOTNES RESTAURANT INSIDE THE NORVAL ART FOUNDATION IN CAPE TOWN, SOUTH AFRICA.



"Ever aware of nuances of mood determined by illumination intensity, Lloyd's chandeliers are as much about their sensitive, diffuse quality of light as they are about handcrafting."

- Martin Jacobs, Private Edition_Conde Nast





MOLECULAR | LIGHT SCULPTURE

PRIVATE HOME, KNYSNA, SOUTH AFRICA

DIMENSIONS

3M (L) X 1,1M (W) X 2,4M (H)

DETAILS

THE MOLECULAR LIGHT SCULPTURE IS LOCATED IN A PRIVATE FAMILY HOME IN KNYSNA, SOUTH AFRICA. THE CUSTOM PIECE HAS BEEN SPECIFICALLY DESIGNED TO CREATE AND FILL THE SPACE AND TO COMPLIMENT THE OPEN DESIGN OF THE HOUSE. IT IS MADE OF OUR ONYX BLACK MULTIFILAMENT ROPE, 7 DIMMABLE LED BULBS, WIRED COPPER DETAILING AND SOFT LAMB SHORN ROVING.

LOCATION

THE PIECE IS LOCATED IN A PRIVATE HOME IN KNYSNA, SOUTH AFRICA.







CUSTOM | LIGHT SCULPTURE



THE HOUSE GOETSCH LIGHT SCULPTURE IS LOCATED IN A PRIVATE BEACH PROPERTY IN PLETTENBERG BAY, SOUTH AFRICA. THE SHAPE OF THE FRAME IS MIMICKING THE SHAPE OF THE WOODEN TABLE PLACED BELOW.

THE LIGHT COMPLIMENTS THE LONG AND SPACIOUS HALLWAY AND ADDS AN EYE-CATCHER THAT IS VISIBLE FROM MULTIPLE STORIES WITHIN THE PROPERTY. THE SHAPE OF THE FRAME REFLECTS ON THE CEILING AS THE STRUT SIZE HAS INTENTIONALLY BEEN DECREASED TO SIT BELOW THE CEILING. THE SCULPTURE IS MADE OUT OF OUR ONYX BLACK MULTIFILAMENT ROPE WITH BEIGE ROPE DETAILING. IT INCLUDES FIVE DIMMABLE LED LIGHT BULBS, COPPER ELECTRICAL FITTINGS AS WELL AS WIRED DETAILING.

TWO TWINS | LIGHT SCULPTURES

NORTH ISLAND, SEYCHELLES

DIMENSIONS

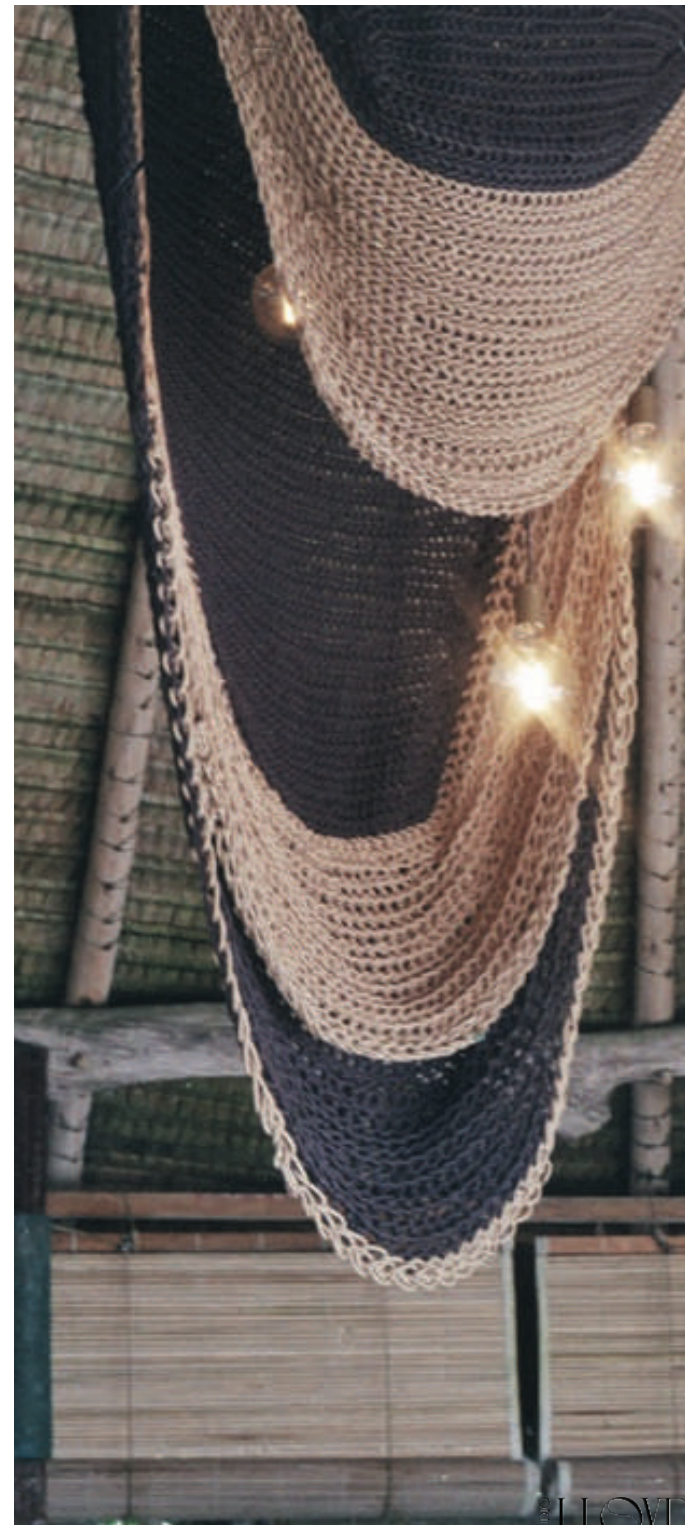
1.2M (L) X 700MM (W) X 4,2M (H)

DETAILS

THE ALMOST IDENTICAL TWIN PIECES ARE LOCATED IN A LUXURY PRIVATE ISLAND RESORT CALLED NORTH ISLAND (ILE DU NORD) IN THE SEYCHELLES. THE TWINS COMPLEMENT THE MAIN DINING AREA OF THE RESORT AND FILL A WELL-CURATED SPACE WITH HIGH RAISED CEILINGS AND A THATCHED ROOF. THE PIECES ARE MADE OF OUR JASPER GREY AND OPAL BEIGE MULTIFILAMENT ROPE AND 6 DIMMABLE LED BULBS IN ONE AND 8 IN THE OTHER. THE MIX OF ROPE COLOURS AND THE ORGANIC SHAPE OF THE TWIN PIECES ADD TO THE SOFT DESIGN OF THE RESORT AND ILLUMINATE THEIR OPEN SPACE WITH WARM LIGHT.

LOCATION

THE TWIN LIGHT SCULPTURES WERE HANCRAFTED ON SITE AND IS LOCATED ON NORTH ISLAND, SEYCHELLES. ONE EACH SIDE OF THE DINING AREA, MIRRORING ONE ANOTHER.







CUSTOM | LIGHT SCULPTURE

A FEATURE PIECE FOR THE DINING AREA IN KWA-ZULU NATAL.

THE PIECE IS CONSTRUCTED FROM OUR OPAL BEIGE MULTIFILAMENT ROPE AND 6 DIMMABLE LIGHT BULBS STRETCH ALONG THE BODY OF THE LIGHT.

HINTS OF MALTA BROWN AND NATURAL HESSIAN TWINE GIVE THE LIGHT SCULPTURE **TEXTURE AND WARMTH.**



REGENERATIVE CYCLE OF LARGE SCALE LIGHTING

DESIGN-USE | REDESIGN-REUSE

Studio Lloyd creates large-scale functional art pieces in the form of lighting for the hospitality and commercial sectors. Their aim is to focus on the longevity of their designs by using the highest quality materials and focusing on repurposing their light sculptures to extend their lifespan. Studio Lloyd offers their clients the opportunity of giving their existing Light Sculpture a new aesthetic.

01

INITIAL DESIGN & MANUFACTURING

Together with the client Studio Lloyd designs a functional art piece sculpture to work exactly in the space given. The frame is the base of the design and offers endless opportunities. The initial design of the light is formed by organic sculpting.

02

INITIAL DESIGN IN EXISTENCE

The initial design has been installed in the client's space and has been existing in it for several years.
The client loves it but since he has decided to redesign the (commercial or residential) space he needs a new look for the sculpture design.

03

REDESIGN & FABRICATION

Studio Lloyd redesigns the sculpture, keeping the existing frame. To avoid unnecessary global shipping, a local coating company will re-coat the frame in a new colour. Studio Lloyd's team comes to site and creates a new body design on the existing frame.

04

REUSED DESIGN IN EXISTENCE

All materials of the initial design will be reused in a new Studio Lloyd project and the client is able to enjoy a whole new design. Instead of creating everything new, Studio Lloyd is able to give your light sculpture a new look without creating any unnecessary waste.



PENDANTS | IRIS - SIGNATURE RANGE



OUR IRIS PENDANTS ARE THE IDEAL EYE-CATCHER FOR ANY SPACE

THEY CAN BE ORDERED INDIVIDUALLY OR
HUNG AT VARIOUS HEIGHTS IN CLUSTERS OF DIFFERENT SIZES.

ALL IRIS PENDANTS ARE MADE OUT OF A ROUND STEEL FRAME, OUR SIGNATURE
MULTIFILAMENT ROPE, HANDCRAFTED CROCHET BODY & LED BULBS.
THE ELECTRICAL COMPONENTS, DETAILING AND STRUT LENGTH CAN BE CUSTOM
DESIGNED SPECIFIC TO OUR CLIENT'S NEEDS.

DIAMETER RING SIZE - 700 | 900 | 1200 | 1600 | 2200MM
VERTICAL STRUTS - 400 | 700 | 1000 | 1300 | 1600 | 2200MM
BRASS CHAIN : 1M-8M LENGTHS
STAINLESS STEEL CHAIN: 1M-8M LENGTHS

CUSTOM PENDANTS

MANGO HOUSE | HILTON HOTEL | SEYCHELLES













STUDIO LLOYD

+



OUR SUPPLIER | FITTINGS & FIXTURES

STUDIO LLOYD HAS BEEN WORKING WITH SOUTH AFRICAN BASED COMPANY HOI P'LOY SINCE AS LONG AS WE CAN REMEMBER.

HOI P'LOY OFFERS AN INCREDIBLE RANGE OF ELECTRICAL COMPONENTS THAT WE USE IN OUR PIECES.

PLEASE FEEL FREE TO VISIT THEIR WEBSITE.

WWW.HOIPLOY.COM

SWATCHES & FINISHES | POWDERCOATING - FOR OUR LIGHT SCULPTURE FRAMES

GLOSS FINISH | MATT FINISH (FERROGRAIN)



ELECTRO | PLATING



OUTDOOR | ENVIRONMENT

AT STUDIO LLOYD WE ARE PROUD TO SAY OUR PRODUCTS ARE MADE TO LAST. IN COMBINATION WITH OUR EXCEPTIONAL HIGH QUALITY ROPE, WE USE HIGH GRADE STAINLESS STEEL FOR OUR FRAMES SUITABLE FOR **OCEANIC ENVIRONMENTS**. ELECTRO-PLATING THE METAL, GIVES IT A BEAUTIFUL, STRONG & LONG LASTING FINISH.

SWATCHES & FINISHES | FITTINGS & FIXTURES

& HARDWARE

DETAILS

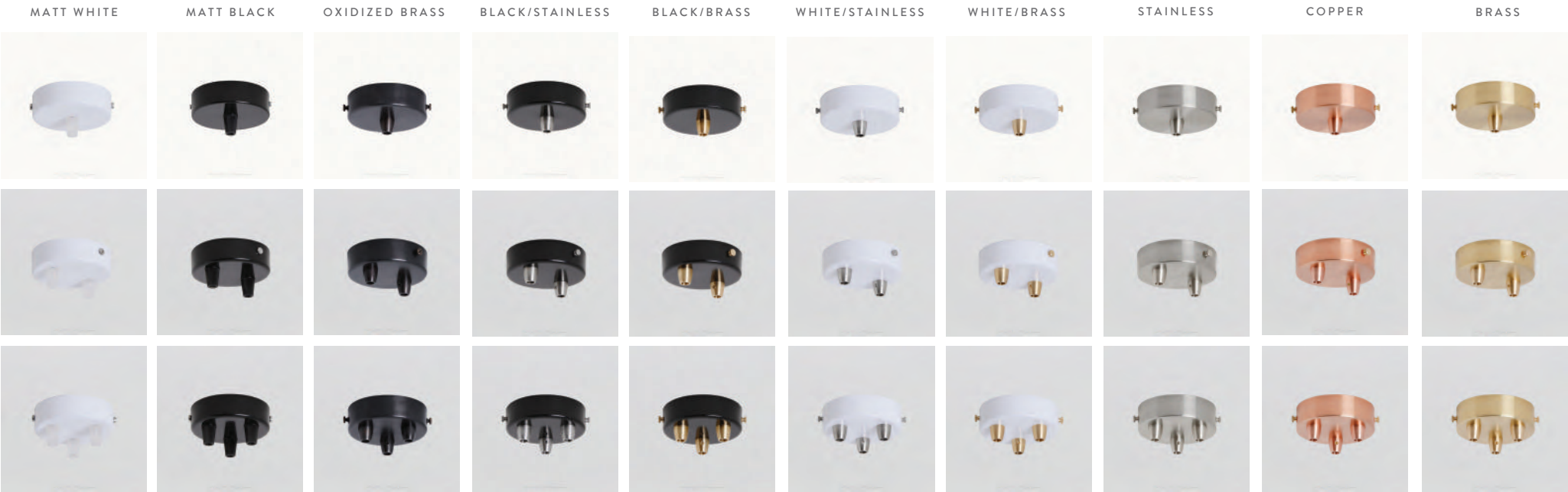
THE CEILING CUPS WE USE IN OUR PIECES COME WITH 1-12 HOLE OPTIONS. THE CUPS ARE EITHER MOUNTED ONTO OUR METAL FRAMES OR ON THE CEILING. THE FINISHES ARE AVAILABLE IN MATT WHITE, MATT BLACK, OXIDIZED BRASS, STAINLESS STEEL, COPPER & BRASS - THE NIPPLES CAN EITHER MATCH OR BE INTERCHANGED.

CUP SIZES:

80MM DIAMETER

120MM DIAMETER

200MM DIAMETER



1-3 HOLE

SWATCHES & FINISHES | FITTINGS & FIXTURES

& HARDWARE



3-6 HOLE

SUPPLIER: HOI P'LOY - HOIPLOY.COM



SWATCHES & FINISHES | FITTINGS & FIXTURES

& HARDWARE



12 HOLE

SWATCHES & FINISHES | ELECTRICAL FABRIC CABLE

FLEXIBLE SOLID CABLE CORD				
		LINEN		
		GOLD		
		CHAMPAGNE		
		PEARL		
		WHITE		
		WHISKEY		
		MAROON		

FLEXIBLE TWISTED CABLE CORD

		IVORY
		GOLD
		WHISKEY
		MAROON
		CHOCOLATE
		MIDNIGHT
		SILVER
		GREY
		BLACK



LET THERE BE LIGHT | LIGHT BULBS & LIGHT FITTINGS

FITTINGS | DETAILS

THE LIGHT BULB FITTINGS WE USE IN OUR PIECES MATCH THE CEILING CUPS. THE FINISHES ARE AVAILABLE IN MATT WHITE, MATT BLACK, OXIDIZED BRASS, STAINLESS STEEL, COPPER & BRASS TOO.



LIGHT BULBS | DETAILS

THE LIGHT BULBS WE USE IN OUR PIECES CAN EITHER BE INCANDESCENT OR LED. WE ALSO OFFER LIGHT BULBS THAT ARE DIMMABLE. WE CAN ALSO DESIGN WITH YOUR COUNTRY'S ELECTRICAL REGULATIONS.



WORDS FROM OUR SUPPLIER - "THE VINTAGE LIGHT BULBS WE OFFER ARE BASED ON SOME OF THE ORIGINAL BULB DESIGNS OF THE GREAT THOMAS EDISON. OUR RANGE OF HAND CRAFTED ANTIQUE STYLE BULBS HAS BEEN MADE FROM HIGH QUALITY MATERIALS AND ARE AVAILABLE IN DIFFERENT SHAPES AND SIZES WITH A VARIETY OF ELEMENT STYLES. WE CATER FOR BOTH BAYONET (B22) AND SCREW (E27) FITTINGS SO WE ARE SURE TO HAVE A LIGHT BULB TO MEET YOUR NEEDS. UNLIKE SOME VINTAGE BULBS AVAILABLE IN THE USA, OUR BULBS HAVE BEEN DESIGNED SPECIFICALLY FOR SOUTH AFRICA'S 220 VOLT ELECTRICITY INFRASTRUCTURE AND HAVE BEEN THOROUGHLY TESTED AND CERTIFIED ACCORDINGLY. THE 40 WATT AMBER GLOW CREATES A SOFT, ROMANTIC LIGHT THAT WE KNOW YOU WILL LOVE."

SAYARI

A NEW COLLECTION

BY

STUDIO LLOYD







SAYARI

The luxurious Sayari Outdoor Collection is inspired by the beauty of the African continent. The launch of a sculptural and curved outdoor seating arrangement. Instead of using traditional shapes and patterns, this collection is a contemporary ode to the place our Studio calls home. "Sayari" is Swahili and translates to "Planet". The focus of the collection lies on being gentle and conscious of our Sayari and to create products made of the Eucalyptus Globulus alien species which has a negative impact on the biodiversity of South Africa. The collection consists of a reflective and thought-through environment - made to last. The simplistic yet eye-catching Maoni Daybed is versatile in its use and offers pairing with the uniquely shaped but functional Kimondo Side Table with marble inlay.

The magic that happens when textures and creative forces collide.

3 | DAYBED FEATURES



WOOD ELEMENT

DURABLE HARDWOOD BASE STAINED AND PROTECTED BY RUBIO MONOCOAT

WOVEN FABRICS

HIGH-QUALITY OUTDOOR UPHOLSTERY BY SUNBRELLA THAT IS REMOVABLE & WASHABLE
THE CURVED ORGANIC HEADREST CUSHION IS BEING HELD BY A FABRIC STRAP FOR EXTRA SUPPORT

POWDER COATING

POWDER-COATED 304-GRADE STAINLESS STEEL RAILING THAT HAS BEEN DRESSED IN OUR SIGNATURE
STUDIO LLOYD CROCHET ROPE FOR DETAIL & SUPPORT

BRAIDED ROPE

POLYPROPYLENE MULTIFILAMENT MARINE-GRADE BRAIDED ROPE SUITABLE
FOR INDOOR & OUTDOOR APPLICATIONS

HARDWARE

STAINLESS STEEL BRANDING & HARDWARE



THE **KIMONDO** SIDE TABLE

The Kimondo Side Table is the discretionary pendant to the Maoni Daybed. “Kimondo” is Swahili meaning “Meteor” which is a rock or metal body in outer space with the ability of entering the earth’s atmosphere. The side table fits perfectly into the larger circular curve of the daybed and is the ideal joint surface to keep personal belongings or refreshing drinks safe yet in reach. Likewise to Maoni, the table is made of the alien species Eucalyptus Globulus with an added alluring inlay of natural stone. The side table is optional yet recommended in order to tie the design of the Sayari outdoor environment together.

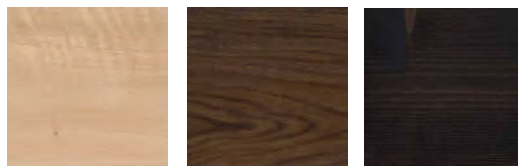
THE KIMONDO SIDE TABLE | Dimensions: **700** mm (L) x **420** mm (W) **190** mm (H)

Natural Wood Finish & Exterior Protection by Rubio Monocoat with Crema Gur Marble Inlay



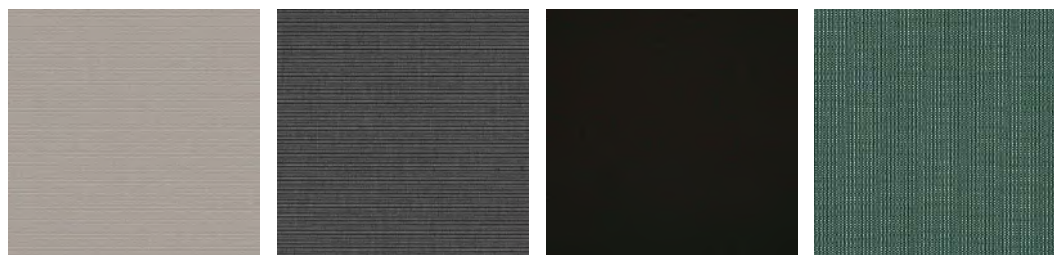
WOODSTAINS & PROTECTION BY RUBIO MONOCOAT

NATURAL | BROWN | BLACK



FABRICS BY SUNBRELLA

NATURAL | STONE | MINK BROWN | SHINGLES | CHARCOAL | BLACK | ALPINE



Rubio
MONOCOAT

sunbrella



POWDER COATING

CREAM | TAN | LIGHT GREY | CHARCOAL | BLACK

OUTDOOR UV STABLE SANDPAPER MATT FINISH IN THE COLOUR OF YOUR CHOICE

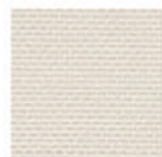


ROPE CHOICE

OPAL BEIGE | DIAMOND GREY | JASPER GREY | ONYX BLACK | OLIVINE GREEN



NATTÉ



NAT 10020 140
WHITE

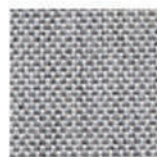


NAT 10233 140
PISTACHIO

NEW



NAT 10064 140
CARBON SKY



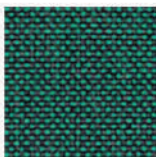
NAT 10022 140
GREY CHINE



NAT 10151 140
LINEN CHALK



NAT 10014 140
NATURE

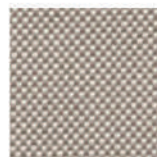


NAT 10232 140
IVY

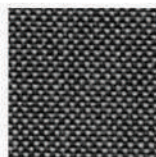
NEW



NAT 10025 140
FROSTY CHINE



NAT 10155 140
TAUPE CHALK



NAT 10059 140
DARK TAUPE



NAT 10021 140
CANVAS



NAT 10235 140
AMBER

NEW



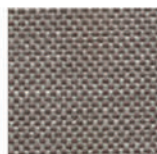
NAT 10065 140
CARBON BEIGE



NAT 10063 140
CHARCOAL CHINE



NAT 10150 140
HEATHER CHALK



NAT 10040 140
NATURE GREY



NAT 10030 140
SOOTY

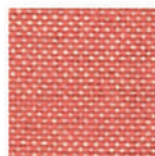


NAT 10028 140
HEATHER BEIGE



NAT 10231 140
CARMINE

NEW



NAT 10234 140
FLAMINGO

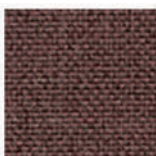
NEW



NAT 10152 140
GRAUMEL CHALK



NAT 10029 140
HEATHER GREY



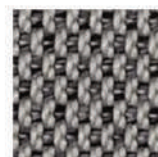
NAT 10101 140
TONKA

NEW

LOPI



LOP R013 140
SHADOW



LOP R017 140
CHARCOAL



LOP R015 140
SILVER



LOP R019 140
SAND

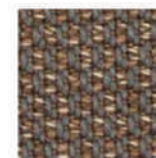


LOP R043 140
ASH

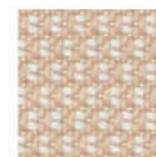
NEW



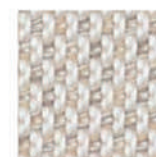
LOP R033 140
SNOW



LOP R014 140
COCONUT



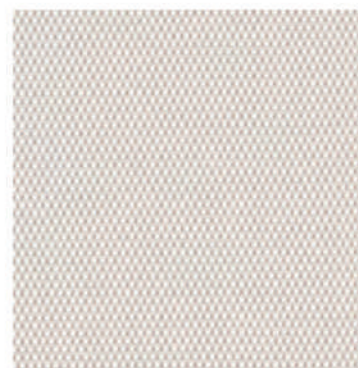
LOP R034 140
ANTIQUE



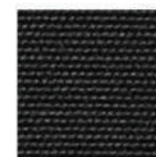
LOP R018 140
MARBLE

More Lopi colours are available in the Bahia collection.

DEAUVE



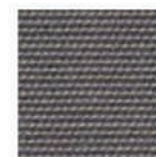
DEA 5453 140
CANVAS



DEA 5032 140
BLACK



DEA 3741 140
SILVER GREY



DEA 3737 140
ARDOISE



DEA 3977 140
CHALK



DEA 3729 140
TAUPE



DEA 5404 140
WHITE

 sunbrella®

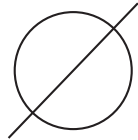


SEATING | OTTOMANS



SEATING | ROUND OTTOMANS

SIZES



900 MM

1100 MM

1400 MM

1800 MM

OUR OTTOMANS ARE HANDCRAFTED FROM 8MM-10MM BRAIDED ROPE

*CUSTOM SIZES CAN BE ACCOMODATED



LLOYD

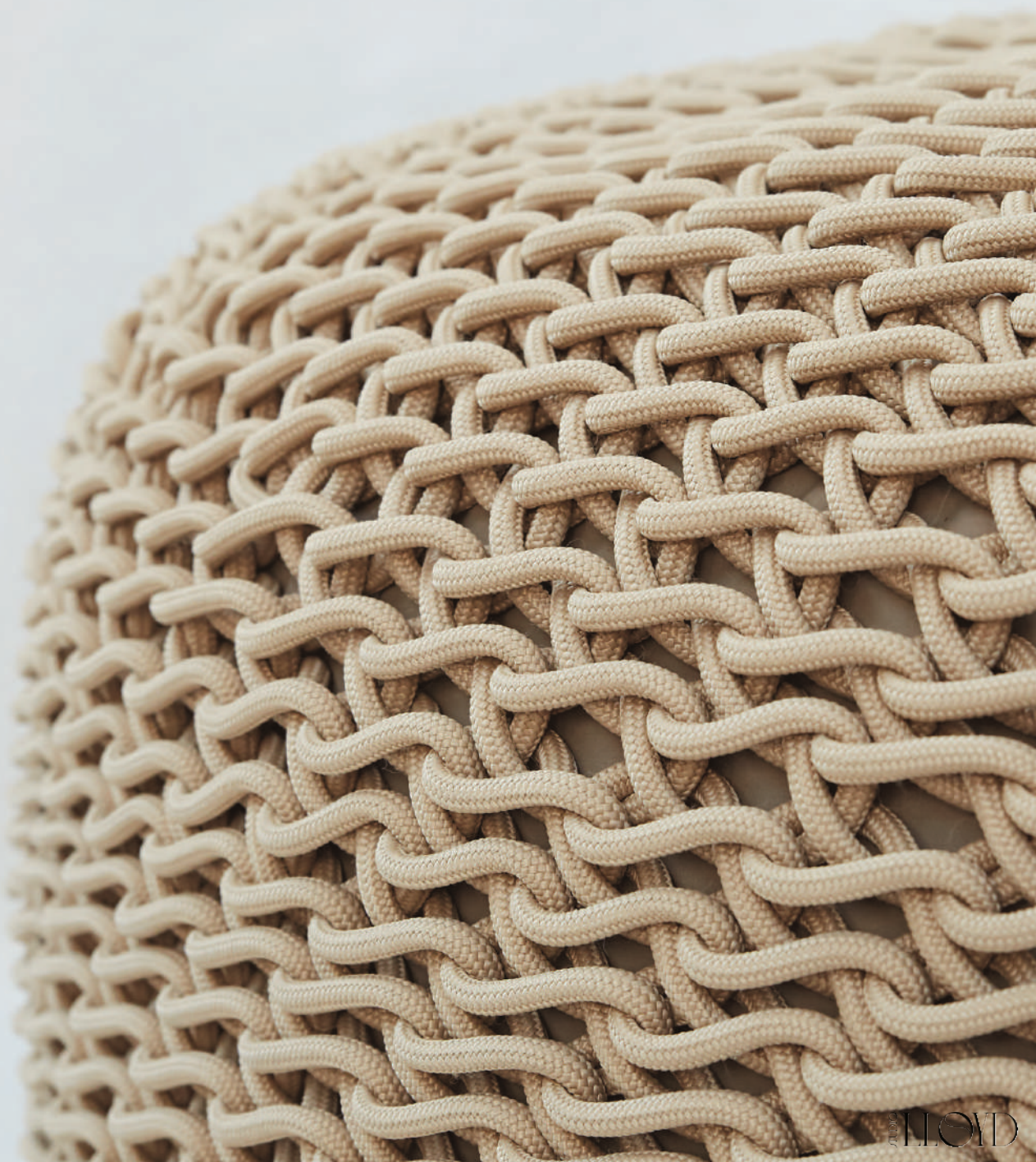
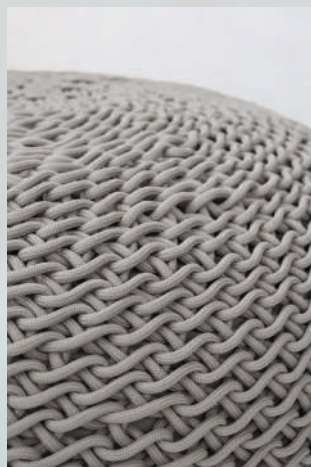
FACTS BEHIND THE FIBRE

OUR OTTOMANS ARE
HANDCRAFTED FROM
HIGH QUALITY BRAIDED
ROPE WHICH HAS BEEN
COATED WITH A UV
PROTECTIVE LAYER.

SUITABLE FOR INDOOR &
OUTDOOR.

LOCALLY SOURCED,
LOCALLY MADE.

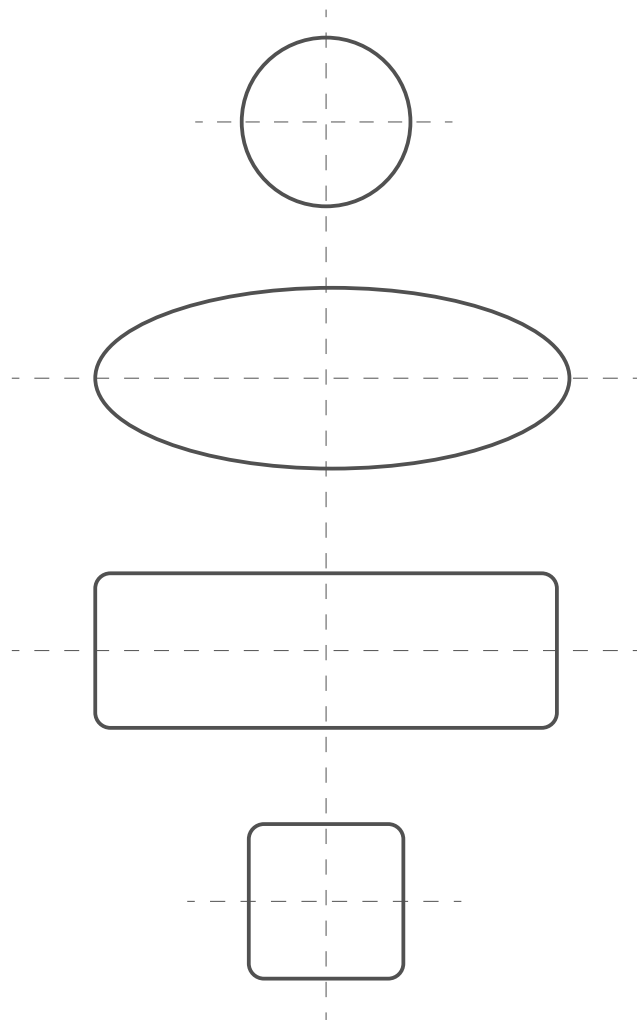
DESIGNED
TO LAST AND BRING
TEXTURE TO YOUR
SPACE.





OTTOMAN | SHAPES

TOP VIEW



SHAPE | ROUND





OTTOMANS | ONYX BLACK - 900



WATER-RESISTANT COVER

STUDIO LLOYD



STUDIO LLOYD

FLOOR MATS

IDEAL FOR BATHROOMS, OUTDOOR SHOWERS,
POOL AREAS & ENTRANCE HALLS



COLOURS | OPAL BEIGE + OLIVINE
GREEN + ONYX BLACK



STUDIO LLOYD



Our latest product addition are these beautiful simplistic floor mats that are perfect for your entrance or bathroom. They are made of polypropylene and nylon, which is soft to the touch and flexible, **resistant to rot, mildew, and UV light**. That is why MFP is one of our favourite and most used materials. They are extremely all-weather durable and due to the UV light protection does not fade in colour.

The floor mats are suitable for indoor and outdoor use and their crochet texture almost adds a **reflexology benefit while used barefoot**.

**COLOUR ON
IMAGE | ONYX
BLACK**

SIZES

SHAPE - RECTANGULAR

750MM X 450MM

1100MM X 800MM

SIZES

SHAPE - CIRCULAR

1700MM D

3400MM D

CUSTOM SIZES AVAILABLE UPON REQUEST



CARPETS | FLOOR

IN IMAGE - **1700MM**

AT STUDIO LLOYD WE CAN CREATE
CUSTOM SIZE CARPETS FOR YOUR
OUTDOOR AREA.

SHAPES:

- CIRCULAR
- SQUARE
- RECTANGULAR
- OVAL



PLACEMATS | DINING

320D





OBJECTS | WALL HANGINGS



OBJECTS | WALL HANGINGS

MANGO HOUSE | HILTON
HOTEL, MAHE, SEYCHELLES

DETAILS

1700MM X 1100MM WALL HANGINGS
CONSTRUCTED FROM TRAVETINE WHITE
& OPAL BEIGE BRAIDED ROPE. HANGING
FROM AN OAK DOWEL ROD, WE
ATTACHED ASSORTED LENGTHS OF
LEATHER TASSELS WITH BRASS
HADRWARE.

BRASS WIRE & BEADS ARE USED FOR
DECORATION. THE PIECE IS HUNG FROM
A SOLID BRASS EYEBOLT ON EITHER SIDE
OF THE OAK DOWEL.



CUSTOM DESIGNED & MADE FOR CLIENT



ALLOYD

SPA AREA

MANGO HOUSE | HILTON HOTEL

SEYCHELLES

XXL CROCHET & MACRAME

WALL HANGING

WITH CROCHET FOOT REST

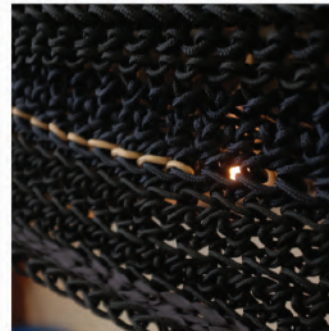
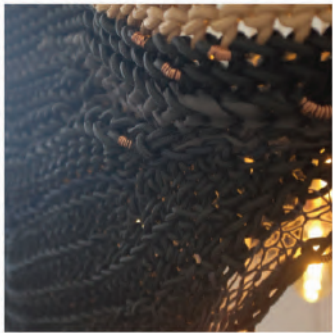


CUSTOM | REQUESTS

INFORMATION

AT STUDIO LLOYD WE USE A VARIETY OF TEXTILE MEDIUMS TO ACHIEVE A UNIQUE LOOKING AND COLLABORATIVE PIECE. OUR TEAM COMES UP WITH THE INITIAL SHAPE AND DIRECTION AFTER RECEIVING THE LOCATION AND DESIGN BRIEF. WE WORK CLOSELY WITH THE CLIENT TO DEVELOP THEIR IDEA OR WE TAKE OUR OWN APPROACH TO THE DESIGN TO SUPPORT THEM IN THE PROCESS.

VARIOUS STITCHES AND TECHNIQUES ARE DEVELOPED TO ACHIEVE DIFFERENT LOOKS THROUGHOUT THE PIECE.
IF THERE IS A PATTERN THAT CATCHES THE EYE, WE CAN MAKE IT HAPPEN, EVEN A HEAD REST IS POSSIBLE ON OUR OTTOMANS.



ABOUT US

ABOUT THE STUDIO

STUDIO LLOYD OFFERS LUXURIOUS LIGHT SCULPTURE, FURNITURE, OBJECTS AND CONCEPTUAL DESIGN OF SPACES. FOUNDED IN 2016, OUR DESIGN HOUSE WORKS CLOSELY WITH THEIR CLIENTELE TO DEVELOP BEAUTIFUL WORKS OF ART THAT ARE CRAFTED BY HAND FOR GAME LODGES, REMOTE RESORTS, EXCLUSIVE HOTELS AND HIGH-END RESIDENTIAL PROPERTY.

STUDIO LLOYD AIMS TO PROVIDE EXCLUSIVITY BY CREATING CUSTOM PIECES THAT ARE CAPTIVATING, EYE CATCHING AND UNIQUE. THE ATTENTION TO EACH PROCESS, THE MANIPULATION OF THE CROCHET TECHNIQUE AND THE PASSION BEHIND EACH PROJECT, MAKES IT UNLIKELY TO FIND SOMETHING SIMILAR.



PRODUCT FOCUSED

• MADE TO LAST

Our products are made of only high-quality and long-lasting materials. We focus on timeless longevity rather than trends and quick-fix materials.

• WORKING AGAINST THROWAWAY CULTURE

Throwaway culture in hospitality is a rising problem. Products are getting exchanged too quickly for the journey they go on until they are with the end consumer. An increase in product exchange results in more manufacturing & logistics processes that have a negative impact on the environment.

• RECYCLABLE & LOCALLY SOURCED MATERIALS

Studio Lloyd sources all of their products locally (the exception is Sunbrella fabric which is known for its high quality and longevity) and all materials are fully recyclable. Even the large scale lighting can be broken up and recycled completely.

• MADE BY HAND

All products are made by hand. Studio Lloyd does not use any machinery in their studio space. No electricity is needed in order to facilitate the sculpting / crafting process.

• PACKAGING & LOGISTICS

Studio Lloyd flatpicks all of their large-scale lighting designs for simplified and more efficient freight handling. All of their products are packaged in custom-made cardboard freight crates rather than wooden crates. All packaging elements are recyclable.

• USE WHAT YOU NEED

Studio Lloyd does not produce any off cuts or waste in any of their products. The mission is to only use what is needed. Everything that is left will be used for a future project.

• JOB CREATION FOR FEMALES

Studio Lloyd creates valuable jobs in the handcrafting industry which does not require any education or prior knowledge. This makes it ideal for low- education communities to be included in the local economy and to be able to care for their families. It is especially important to create jobs for females as they become a fundamental part of financially supporting their household.

• SKILL DEVELOPMENT & PERSERVEMENT

Keeping traditional handcrafting techniques alive is important for communities and individuals whose culture is based on such crafts. Teaching each other skills leads to an improvement in communication which filters down to the communities and how they communicate. Our staff is able to learn, improve and pass on the skills learned at the studio.

• SUPPORTING SMALL BUSINESSES

As everything is sourced and manufactured locally, Studio Lloyd supports an array of small and medium-sized businesses. One supports another to be able to contribute to the local economy and to make sure projects are facilitated within South Africa.

• SAFE WORK ENVIRONMENT FOR WOMEN

In South Africa, women are the most important member of the family as they raise the children as well as contribute to the household's income. Getting to and from work is risk affected and a safe and understanding work environment makes adds a positive impact on their lives. Studio Lloyd is aiming to achieve exactly that for their team members.

• USE WHAT NEEDS TO GO

Wherever possible, Studio Lloyd is trying to look into using resources that are intended to go as they have a negative impact on the biodiversity of South Africa. For example, the whole Sayari outdoor collection is made of Eucalyptus Globulus (Blue Gum).

SUSTAINABILITY

PEOPLE FOCUSED

OUR CLIENTS:

MANGO
House
DESIGN

L X R
HOTELS & RESORTS

NORVAL
FOUNDATION

north island
SEICHELLES

X INDEX

mFulaWozi
WILDERNESS

STUDIO A

BEYOND

FOXBROWNE
CREATIVE

Hilton

BISTRO
sixteen82
—AT STEENBERG—

Lulu
maison

TABBERT
INTERIOR CONSULTANTS

Singita
GAME RESERVES

Singita

1stDIBS

AS FEATURED IN:

visi
SA's MOST
BEAUTIFUL
MAGAZINE

W

SOUTH AFRICAN
HOME OWNER
WELCOME HOME

PRIVATE
EDITION

Condé Nast
Traveler

DESIGN
INDABA
A BETTER WORLD THROUGH CREATIVITY

ELLE
DECORATION

the
culture
trip

Reed
Exhibitions

CONDÉ NAST

100% design
south africa

Show Partners

decor ex
JOBURG

DEEP

PLAT
FORM

de
zeen

Marcia
Lover

HOTEL DESIGNS.

TESTIMONIALS & PRESS RELEASES

“

Studio Lloyd is an example of World-Class African Design

— Franco Van Wyk - Singita - Luxury African Safari Lodges & Wildlife Reserves

“

“Working with Studio Lloyd has been an absolute joy! Their talent not only lies in their craft, but also in their attitude towards helping their clients create unique, ‘conversation starter’ pieces. Their communication and response to our brief was exactly what was expected and much more. We are absolutely pleased with what has been produced for Onguma Camp Kala and we would suggest them to anyone looking to create something truly awe-inspiring.

Thank you Studio Lloyd from Fox Browne Creative!”

— Clyde Soundy - Lead Designer at Fox Browne Creative

“

Ever aware of nuances of mood determined by illumination intensity, Lloyd’s chandeliers are as much about their sensitive, diffuse quality of light as they are about handcrafting.

— Martin Jacobs - Creative Director at Private Edition_Conde Nast

STUDIO LLOYD

IF YOU WOULD LIKE A MORE DETAILED
CATALOGUE ON ANY OF OUR PRODUCTS, PLEASE CONTACT

DESIGN@STUDIO LLOYD.COM

STUDIO LLOYD.COM

ALL PHOTOGRAPHERS CREDITED ON OUR WEBSITE